



Manual Wireless Internet (WiFi)

Mac OSx SnowLeopard

MAC OSx is not supported by ICTS.
Therefore, please consider this manual a courtesy.

This manual explains how to connect to the university network with a wireless internet connection on a computer within reach of a WiFi wireless access point.

WiFi is set up according to the wireless network client's policy. This means that services running on your notebook (such as an FTP server, SMTP server, WWW server, etc.) are not accessible for other MAASnet or internet users.

What do you need?

- A laptop with an 802.11g-, 802.11b/g or 802.11n-compatible wireless network adapter (to find out if your network adapter is compatible, please consult the hardware documents).
- The wireless network adapter must support 802.1x wireless security.
- Administrator access on a local computer (you will need to change your settings).
- A Maastricht University employee or student account, or a valid account at a university or other higher education institute affiliated to eduroam.
- An installed version of Mac OSx. (This manual uses 10.5)
- [Also consult the FAQs and problems at the end of this manual.](#)

Maastricht University offers 3 wireless networks:

UMnet: Only for employees with a valid UM employee account.

eduroam: For students and employees of the Maastricht University and other institutes that are connected to the eduroam network.

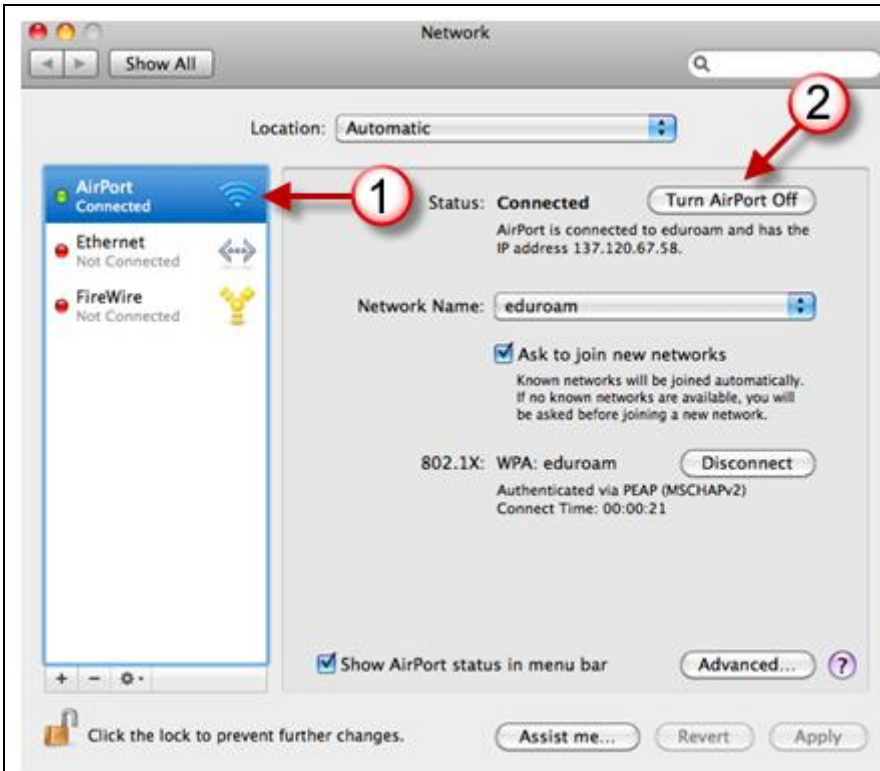
UMguest: For invited guests of the university with a UM guest account.



Step 1: Open the configuration window

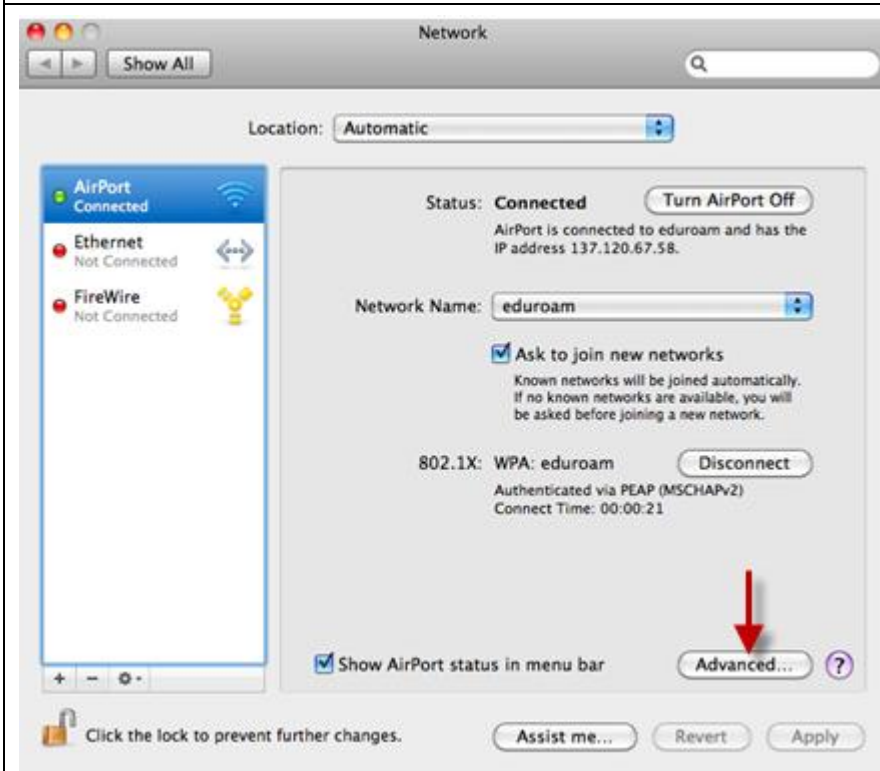
Click on the icon for System Preferences in your dock.

Go to network settings by clicking on the icon for network settings, *Network*.



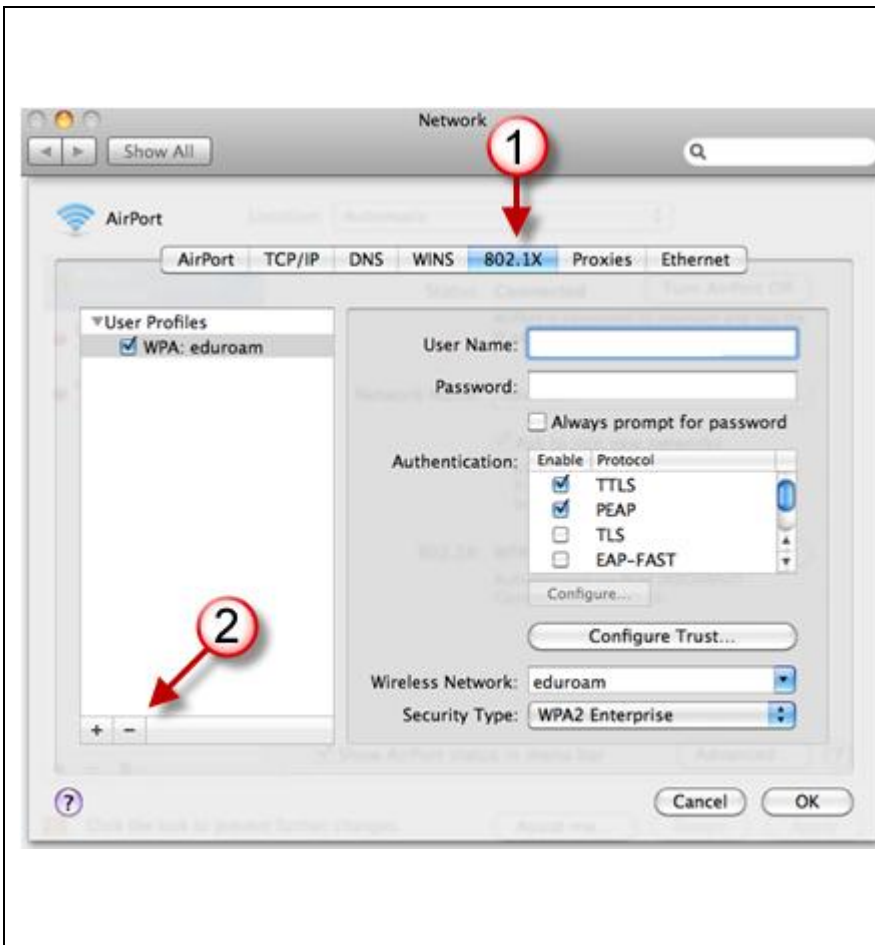
Step 2: Network

Click on the adapter *AirPort* and turn it on if necessary.



Step 3: Network

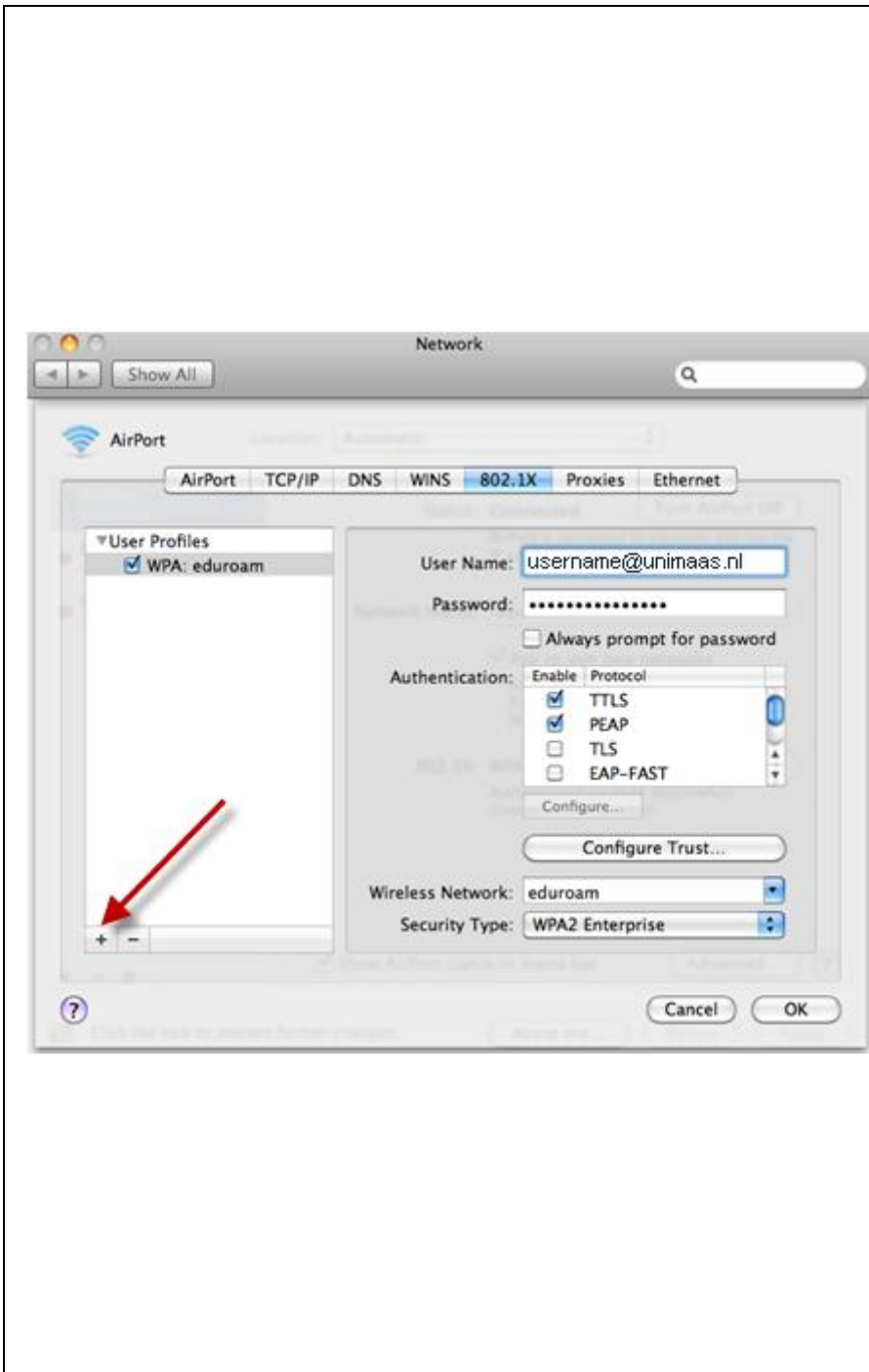
Click on *Advanced...*



Step 4: 802.1X Settings

Click on *802.1X* on the top of the screen.

Use the "-" button to delete all UMnet, UMGuest or Eduroam profiles already in the list.



Step 5: Adding the network

Click on the “+” button and select “Add User Profile”.

Username:

Students

Id-number@unimaas.nl

(e.g.

“i1234567@unimaas.nl”

Employees

user.name@unimaas.nl

(e.g.

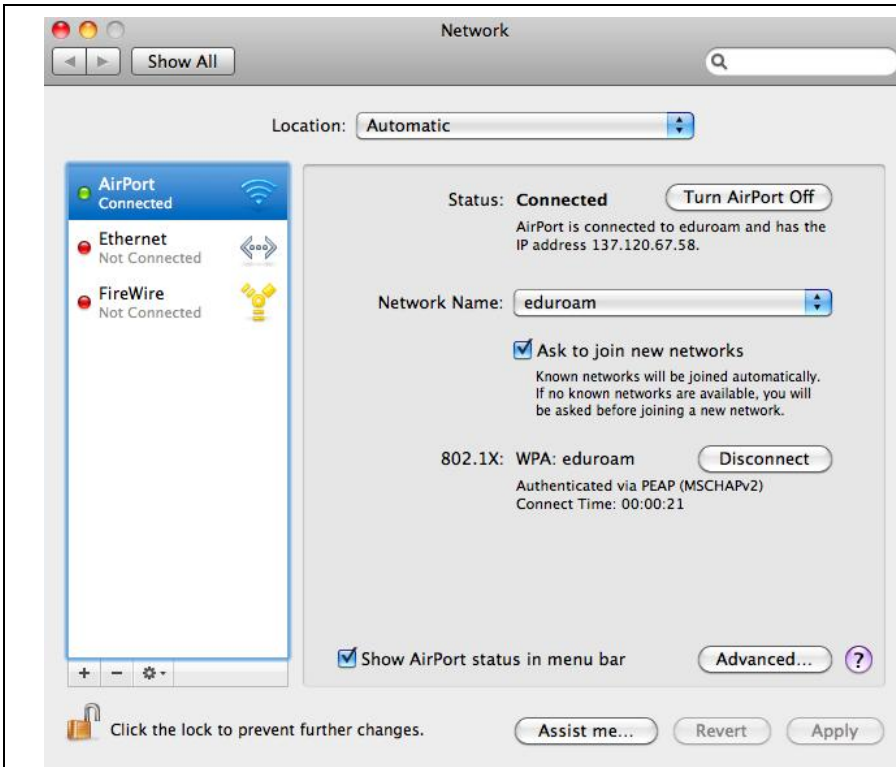
“abc.employee@unimaas.nl”)

Password: empty the line and fill in your unimaas password (the same one you use for webmail and EleUM).

Authentication:

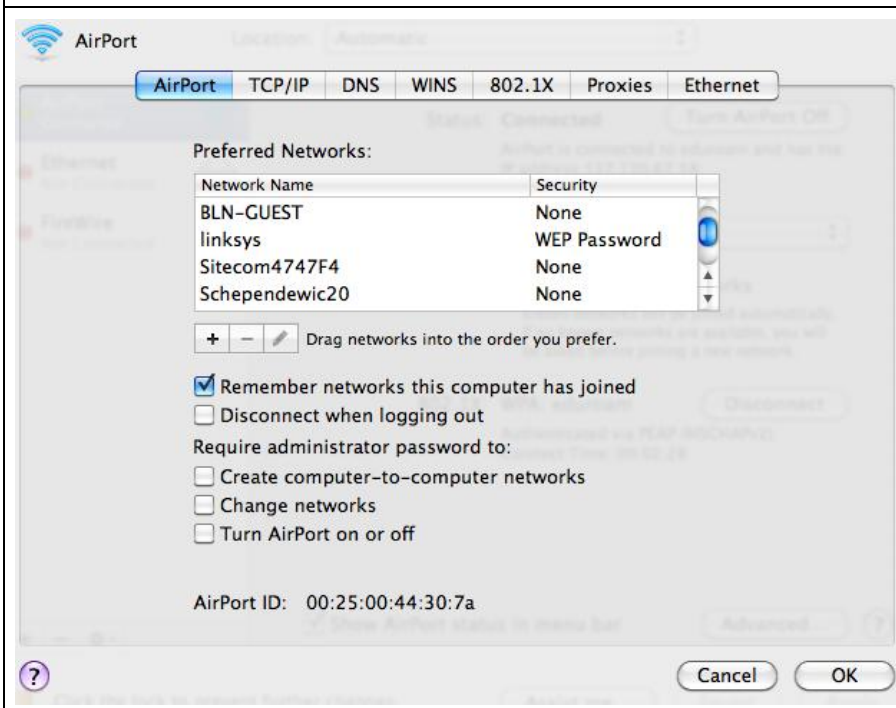
Select *TTLs* and *PEAP*.

Click on *OK*.



Step 6: Apply settings

Click on *Apply* and click on *Advanced...*





Step 7: AirPort

Click on *AirPort* on the top of the screen. (See the tab left).

Click on the "+" icon.

	<p>Step 8: Enter the name of the network</p> <p>Fill in the following date: Network Name: Students: eduroam Employees: UMnet</p> <p>Security: <i>WPA2 Enterprise.</i> User Name: <i>leave empty.</i> Password: <i>leave empty.</i> 802.1X: <i>WPA: eduroam</i></p> <p>Then click on <i>Add</i>. Click on <i>OK</i>.</p>
	<p>Step 9: Apply settings</p> <p>Click on <i>Apply</i>.</p> <p>The computer will now make a connection the wireless network.</p>

	<p>Step 10: Verify Certificate</p> <p>Click on <i>Continue</i>.</p> <p>Note: It is possible that this screen does not appear.</p>
	<p>Step 11: Open the web browser</p> <p>Open the web browser on your computer.</p>



Step 12: Register your wireless card

Go to a webpage (e.g. www.maastrichtuniversity.nl). You are redirected to a registration page to register your network card.

(If the registration page does not open, go manually to <http://netreg.unimaas.nl>)

Employees

Lees en accepteer de voorwaarden door onderstaande procedure uit te voeren:

- .og in met uw UNIMAAS gebruikersnaam en wachtwoord
- !klik "Accept" of druk "enter" om de voorwaarden te accepteren.
- [GEBRUIKS- EN BEHEERSVOORWAARDEN MAASnet UM \(Word 2000 document\)](#)
- [Gebruiksvoorwaarden Campus@Maastricht \(HTML\)](#)

Please read and accept the conditions by following the procedure below:

- .og in with your UNIMAAS loginname and password
- !click "Accept" or press "enter" to accept these conditions
- [MAASnet UM USAGE AND MANAGEMENT CONDITIONS \(Word 2000 document\)](#)
- [Gebruiksvoorwaarden Campus@Maastricht \(HTML\) \(Dutch only\)](#)

Gebruikersnaam / Username:
 Wachtwoord / Password:

Accept

Username

Fill in only your username e.g. "abc.employee".

Password

This is the same password you use to check your email and log in on computers on the university.

Click on *accept* and restart your computer.

Students

Lees en accepteer de voorwaarden door onderstaande procedure uit te voeren:

- .og in met uw UNIMAAS gebruikersnaam en wachtwoord
- !klik "Accept" of druk "enter" om de voorwaarden te accepteren.
- [GEBRUIKS- EN BEHEERSVOORWAARDEN MAASnet UM \(Word 2000 document\)](#)
- [Gebruiksvoorwaarden Campus@Maastricht \(HTML\)](#)

Please read and accept the conditions by following the procedure below:

- .og in with your UNIMAAS loginname and password
- !click "Accept" or press "enter" to accept these conditions
- [MAASnet UM USAGE AND MANAGEMENT CONDITIONS \(Word 2000 document\)](#)
- [Gebruiksvoorwaarden Campus@Maastricht \(HTML\) \(Dutch only\)](#)

Gebruikersnaam / Username:
 Wachtwoord / Password:

Accept

Username

Fill in only your id-number e.g. "i12345".

Password

This is the same password you use to check your email and log in on computers on the university

Click on *accept* and restart your computer.

You are done configuring the WiFi connection.





Known problems:

Problem:	Solution:
My wireless card does not support 802.1x authentication.	It is not possible to use the wireless network with this card.
My operating system does not support 802.1x EAP-PEAP authentication.	MacOS10.3 or higher (not supported) can use the Wireless Network.
The "eduroam" network can not be found.	Your computer is probably too far removed from an active access point. Get closer to an access point.
Person is not a student or employee of the UM and does not have a user name or password.	Employees and students or persons from eduroam affiliated institutes can use their own account to use eduroam.
Student has not received an username and password.	You can get this information at the ICTS Front-office. Opening times and locations can be found on: http://www.maastrichtuniversity.nl/icts/ NOTE: You need a valid ID card or drivers license and you're an UM student number to get a new password.

Frequently Asked Questions:

Question:	Answer:
How can I see if my network card supports the "G" standard?	Most Apple notebooks support the "G" standard. You can ask your supplier or manufacturer if you are unsure.
Are there other manuals for MAC users?	Yes, the MAC users group offers support on their website: http://mac.unimaas.nl NOTE: The UM does not offer support.